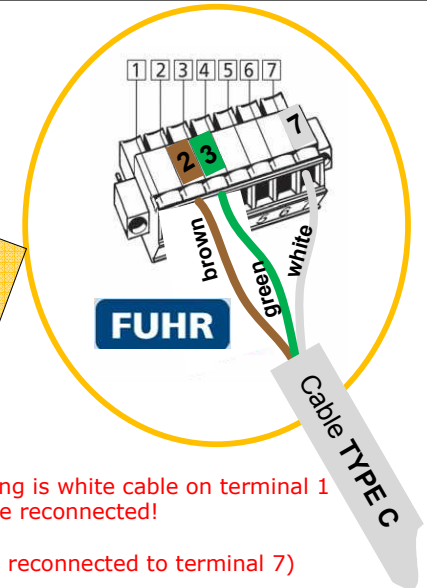


Legend cable TYPE A (4x0.14)

green	RS485 (clamp 1)
yellow	RS485 (clamp 2)
brown	Voltage (clamp 3)
white	Voltage (clamp 4)



This wiring plan may also be used for **FUHR Autotronic 834!**

Legend cable TYPE B (8-corex0.14)

blue	Switching input 1
grey	Switching input 2
yellow	RS485 (clamp 2)
green	RS485 (clamp 1)
brown	(-) VCC (clamp 3)
white	(+) VCC (clamp 4)
pink	Relay 2 C
red	Relay 2 NO/NC

ekey components list

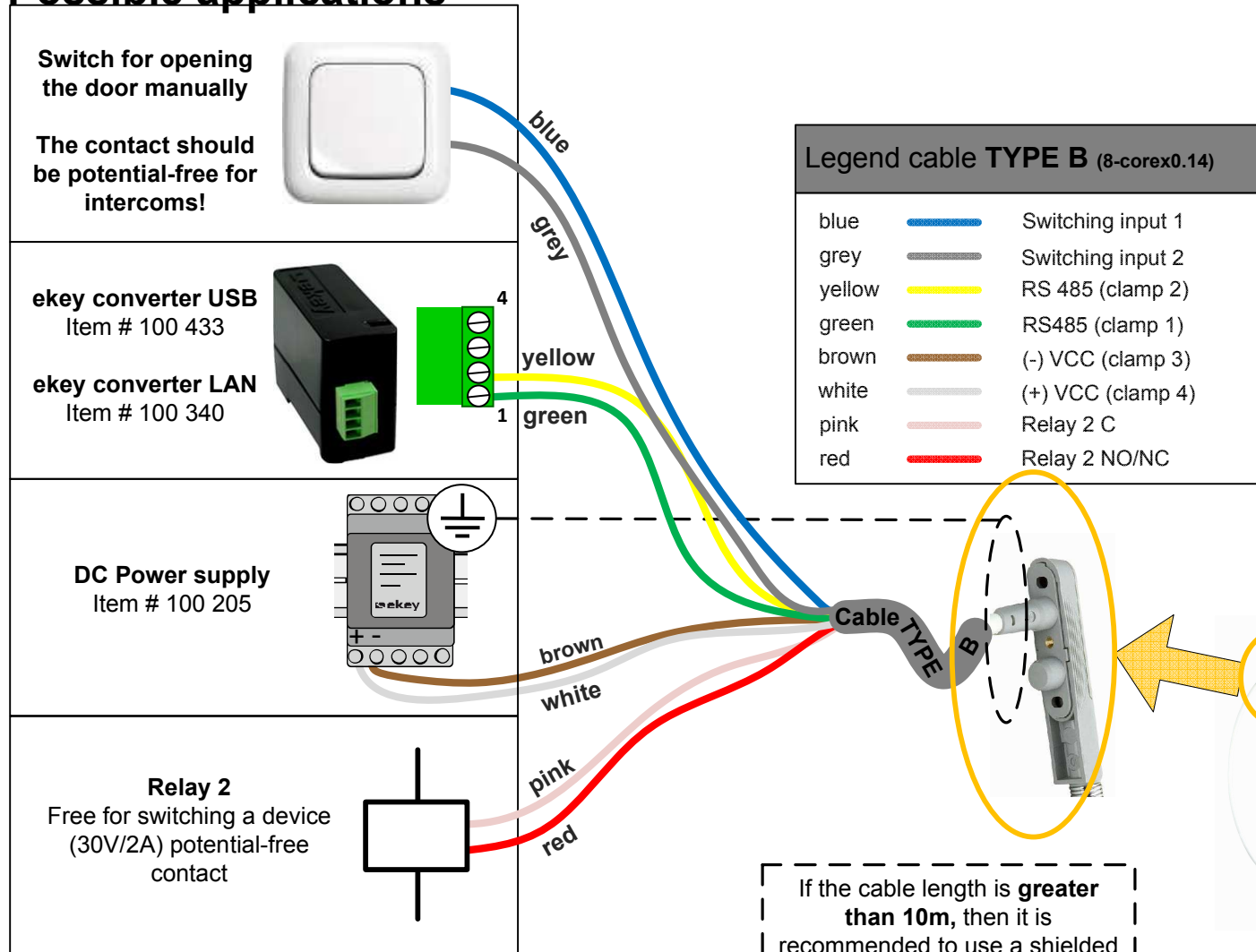
1	ekey home finger scanner integra	4	Cable type C
2	ekey home control panel integra	5	Cable type A
3	ekey cable transfer	6	Cable type B included in the cable transfer

Legend cable TYPE C (3-corex0.34)

green	(+) Switch
brown	(-) Gnd
white	(+) VCC

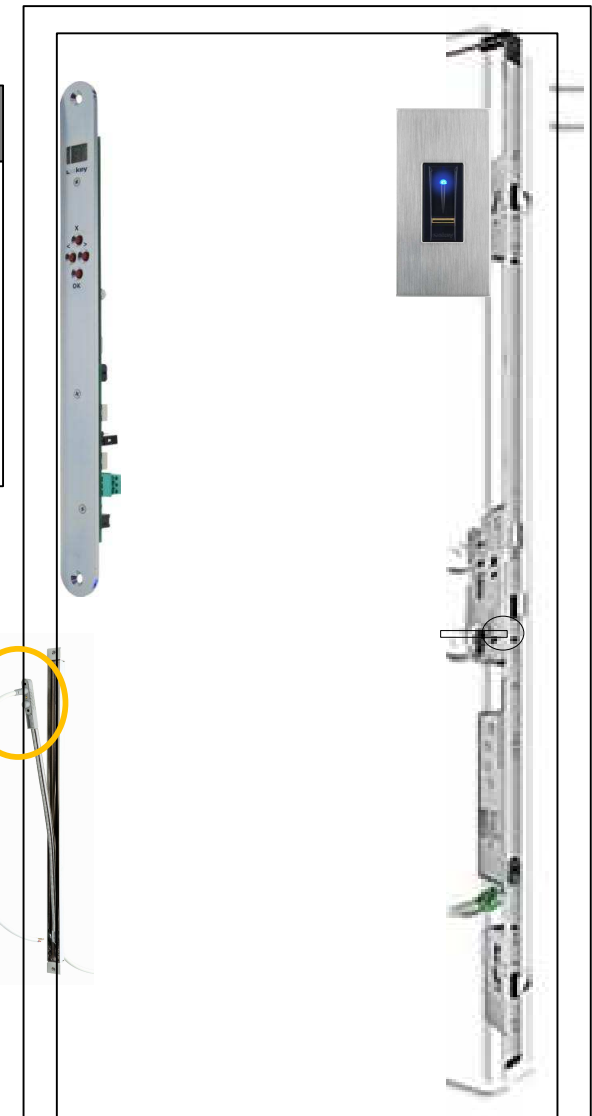
Subject to optical and technical modifications, any liability for misprints excluded

Possible applications



If the cable length is **greater than 10m**, then it is recommended to use a shielded cable e.g. type B (LiYCY)!

BEWARE!
Idle leads should be insulated separately!



FUHR Multitronic 881

Subject to optical and technical modifications, any liability for misprints excluded!