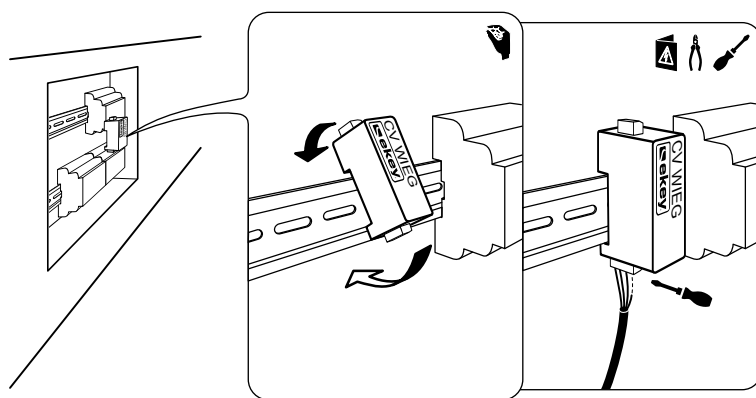
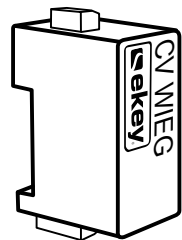


1x



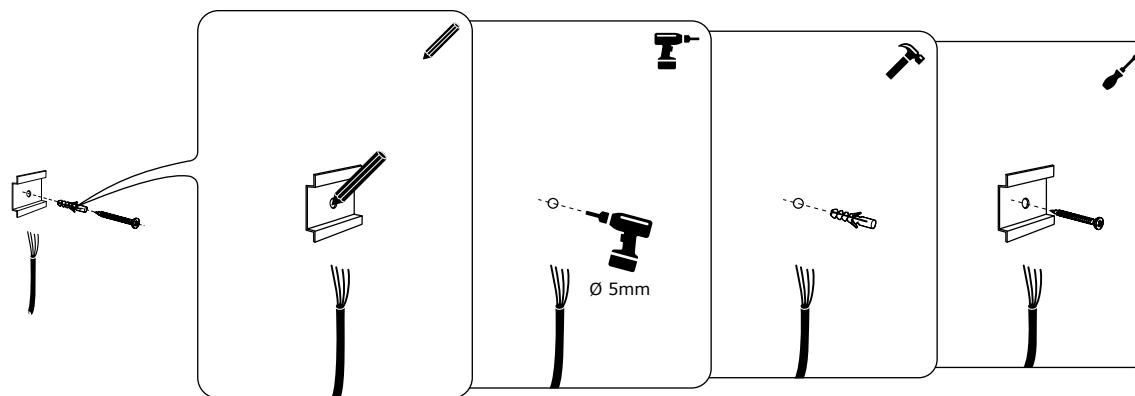
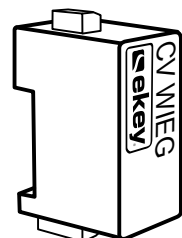
1

1x

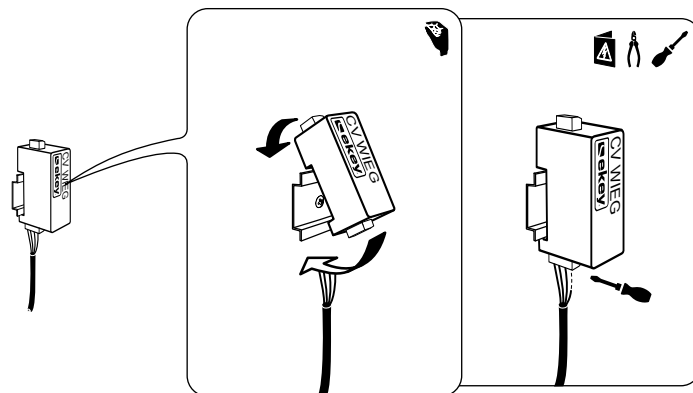
1x

1x

1x



1



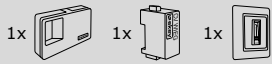
2



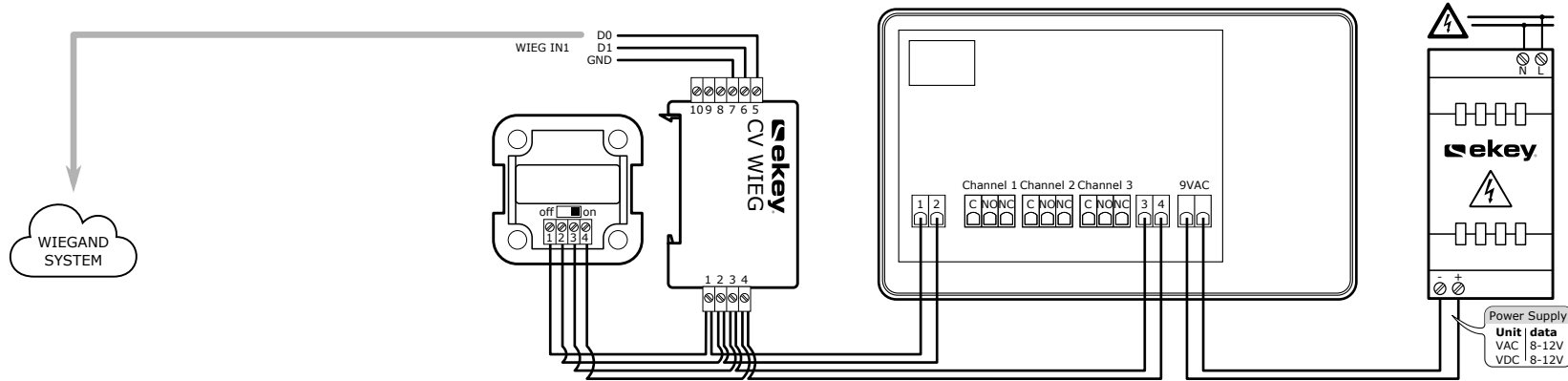
MONTAGEANLEITUNG
MOUNTING INSTRUCTIONS
MONTÁŽNÍ NÁVOD
NOTICE DE MONTAGE
ISTRUZIONI DI MONTAGGIO
MONTAGEAANWIJZING
MONTÁŽNY NÁVOD
NAVODILA ZA MONTAŽO

ID135/225: Version: 1, 22.07.2013
<http://www.ekey.net/downloads>





ekey home version

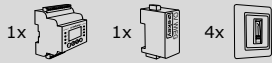


VERKABELUNGSPLAN
WIRING DIAGRAM
SCHEMA ZAPOJENÍ
SCHEMA DE CÂBLAGE
SCHEMA DI CABLAGGIO
BEKABELINGSPLAN
SCHEMA ZAPOJENIA
NAČRT OŽIČENJA

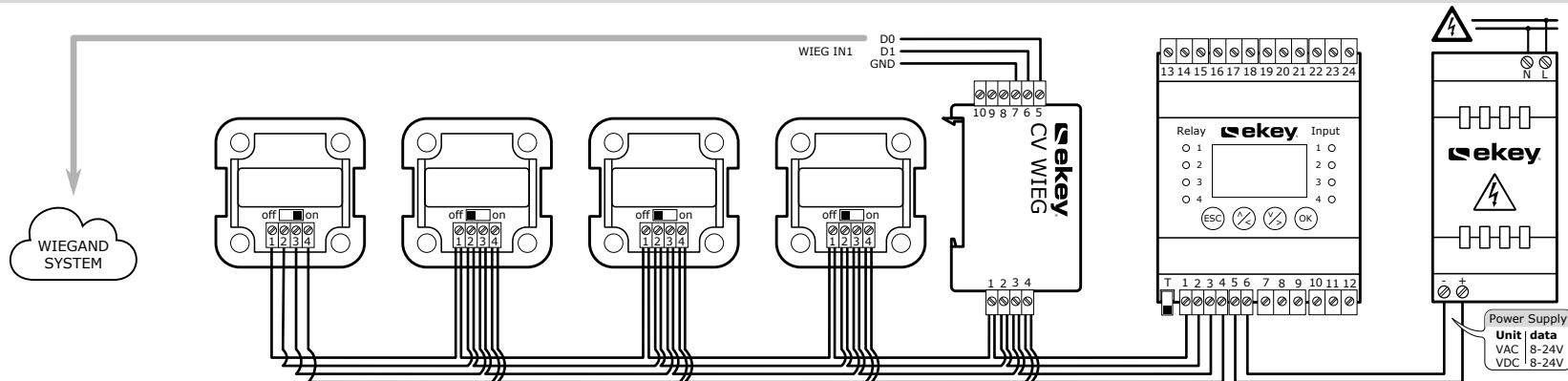
ID135/225: Version: 1, 22.07.2013
<http://www.ekey.net/downloads>



801887



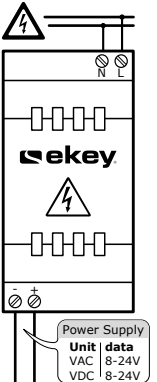
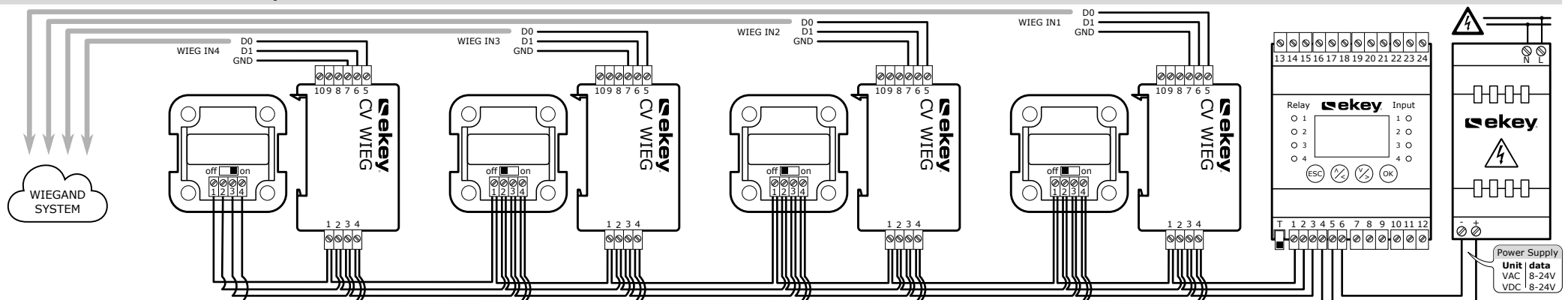
ekey multi version 1



PIN	DESCRIPTION
1	RS485 (Clamp 1)
2	RS485 (Clamp 2)
3	Power supply
4	Power supply
5	WIEGAND D0
6	WIEGAND D1
7	WIEGAND GND
8	free
9	free
10	free



ekey multi version 2



Power Supply
Unit | data
VAC 8-24V
VDC 8-24V